



Department  
for Education



**Pank Patel**

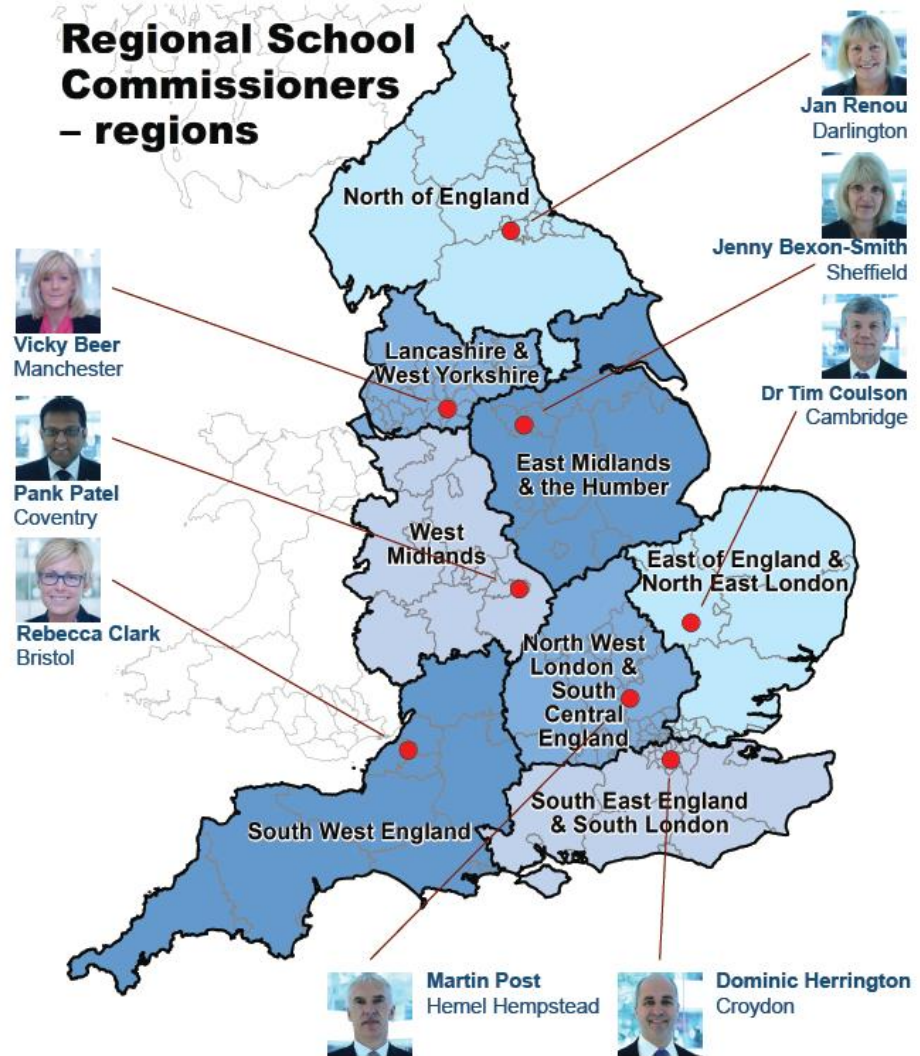
**West Midlands  
Regional Schools Commissioner**



# RSC regions

- England is split into eight geographically pragmatic regions of reasonable size.
- Reasonable spread of challenge across the RSC's roles.
- London is split into three and combined with neighbouring home counties – spreading expertise.

## Regional School Commissioners – regions





# Core Aims of the RSC Role

- Monitoring the performance and intervening to secure improvement in underperforming academies
- Taking decisions on the creation of new academies
- Ensuring that the sponsor market meets local need by authorising new sponsors and challenging those that exist to perform even better
  - **Promoting and supporting new models of System leadership**



# What might a Regional Schools Commissioner do in a typical week?

- ***Monitoring the performance and intervening to secure improvement in underperforming academies***
- *RSC intervene only when there is evidence that performance is weak*
  - Assessing Trust Action Plans
  - Visiting Academies to see for themselves
  - Commission visits from Education Advisors or members of the HTB
  - Commission school to school support from the most appropriate source



## What might a Regional Schools Commissioner do in a typical week?

- *Ensuring that the sponsor market meets local need by authorising new sponsors and challenging those that exist to perform even better*
  - **Strategic Growth** planning conversations with trusts
  - Working with LA and Sponsors to build **regional strategies** that avoid schools being left behind
  - Assessing the **readiness** of existing trusts to grow
  - Meeting with CEO and Chairs of Boards to assess **capacity, performance and progress** in and across their Trust



# What might a Regional Schools Commissioner do in a typical week?

- ***Taking decisions on the creation of new academies***
  - Chair a meeting of the **Headteacher Board**
  - Meet with **Sub Regional Groups** deepen understanding of local challenges and potential solutions
  - Link the **Regional Delivery Plan** to the needs of the **Sub Region**
  - Meet with Local Authorities, Teaching School Alliances, MATS and stand alone academies to get greater **local intelligence to influence decision making**
  - Assess **Free School applications** against the level of need and the degree of confidence that the proposer can open and operate a good or outstanding school



# *The Shift to a School Led System - pre 1988 to 2010*

- *Local Authorities run schools, employ staff and take decisions about schooling in their area*
- *Local Management of Schools & National Curriculum Format-1988 Education Reform Act*
- *National Inspection Framework-1992 Education (Schools) Act*
- *School Performance Tables introduced in 1992*
- *City Technology Colleges - 1988 to 1993 First state funded independent schools*
- *First City Academies with sponsors investing up to £2m launched in 2002 and led by Lord Andrew Adonis & focused on inner city areas*



# *The Shift to a School Led System - 2010 to Today*

- *Wave 1 Academies under Labour Administration saw 200 open by 2010 GE*
- *Hard Federations became a new structure in the system*
- *Convertor Academies and Free Schools introduced from 2010*
- *Teaching Schools launched in 2011 (750+ now)*
- *September 2014 the first Regional Schools Commissioners & HTB were appointed*
- *Today - 800 Sponsors mainly great schools and third sector charities*
- *Today - Multi Academy Trusts-1000 by July 2016*





Department  
for Education



What's happening  
out there.....?



**TEAM WMRSC**

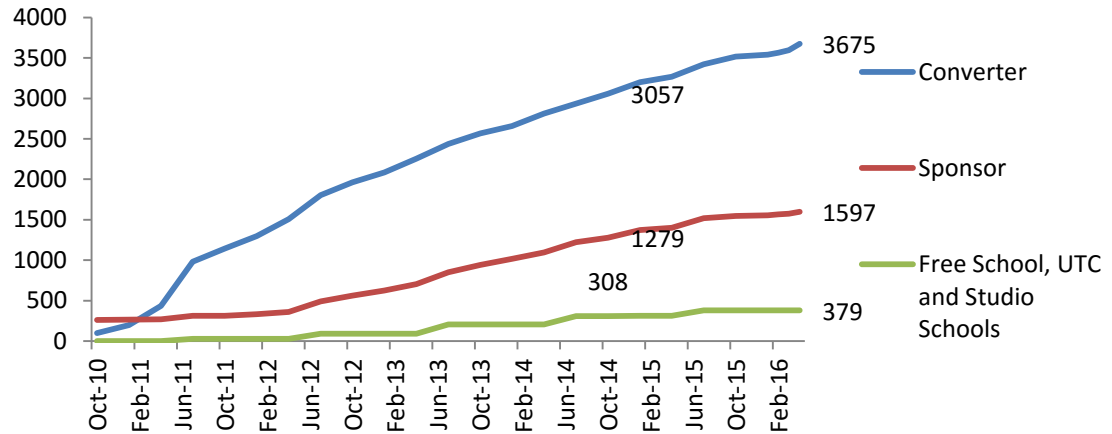
Office of the West Midlands  
Regional Schools Commissioner



# Current picture

- 5650 open academies and free schools in England
- 3,675 converter academies
- 1,597 sponsored academies
- 379 free schools (304 free schools, 37 studio schools and 39 UTCs)

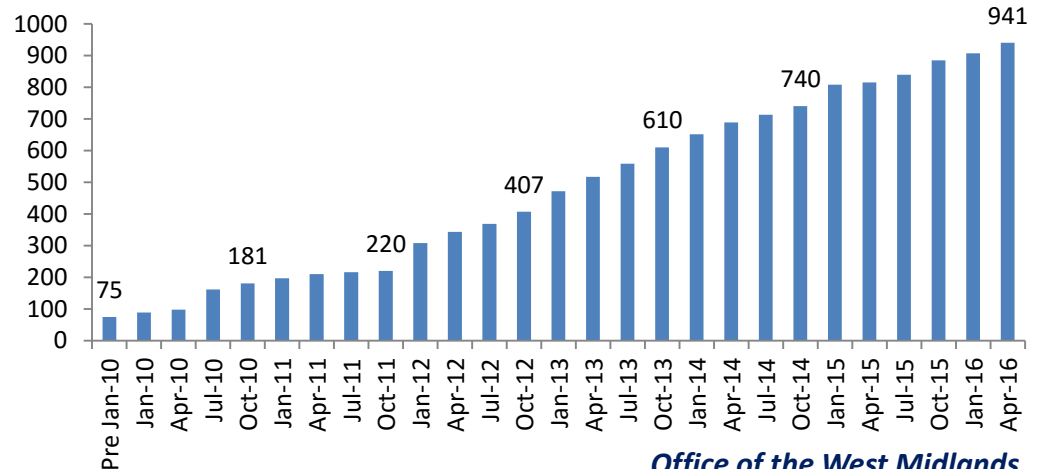
## Academy and Free School Growth since September 2010



### April 2016

- 469 Sponsors have been approved since January 2013
- 941 Sponsors approved Sponsors ready for Projects.

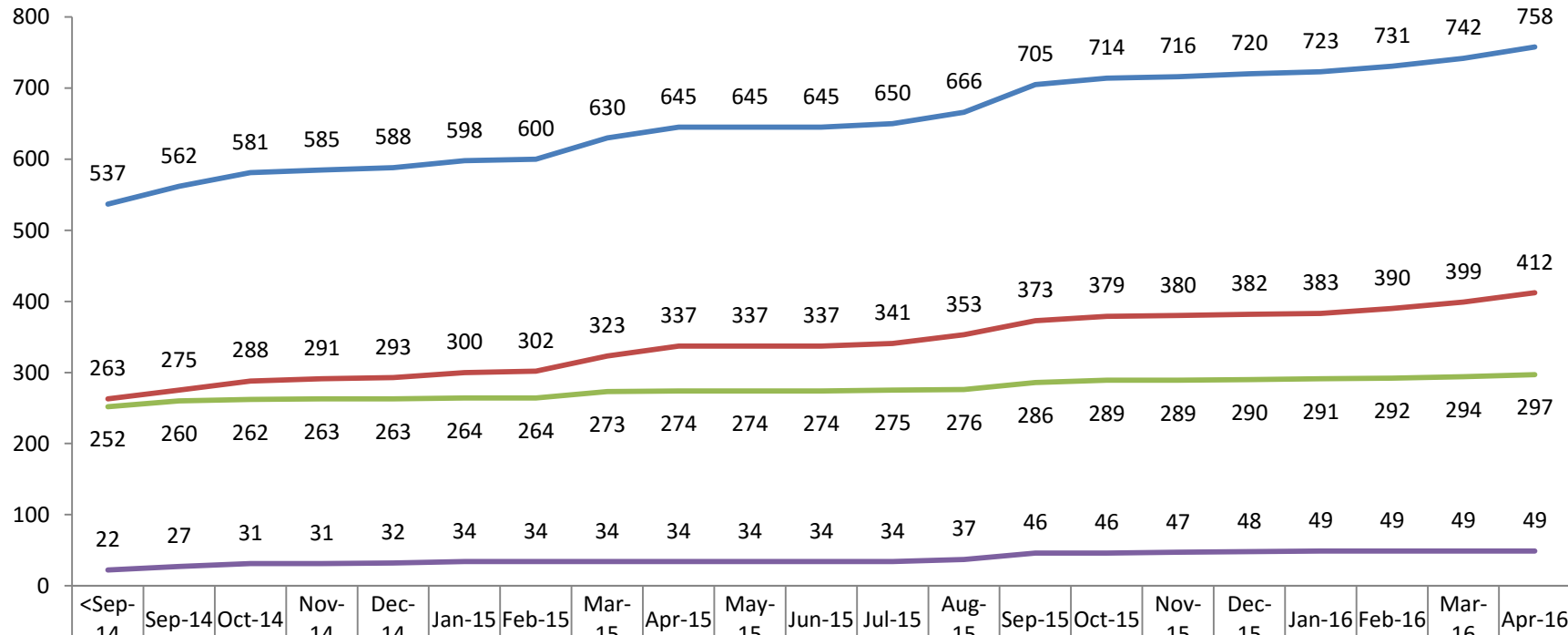
## Number of Sponsor Approvals





# WM Academy Growth

## Growth in Academies in West Midlands since September 2014



Shows the growth in academies from the inception of the RSC in September 2014 to August 2015.

## Academies Key Data – 1<sup>st</sup> June 2016<sup>i</sup>

<b>Number of open academies</b>	<b>5336</b>
- Number of converter academies	3721
- Number of sponsored academies	1615
Number of open free schools	304
Number of open studio schools	40
Number of open UTCs	39
<b>Total number of open academies, free schools, studio schools and UTCs</b>	<b>5719</b>

% of primary schools open as academies <b>or free schools, studio schools and UTCs</b> (incl. middle deemed primary)	19%	Remaining LA maintained primary schools	13579 (81%)
% <sup>11</sup> of secondary schools open as academies <b>or free schools, studio schools and UTCs</b> (incl. MD secondary, AT and 16 plus)	66%	Remaining LA maintained secondary schools	1163 (34%)

### 1<sup>st</sup> June openers

Phase of Education	Converter	Sponsored	Total
Primary	20	8	28
Secondary (incl. MD secondary, AT and 16 plus)	2	0	2
Special	2	1	3
Alternative Provision	1	0	1
<b>Total</b>	<b>25</b>	<b>9</b>	<b>34</b>

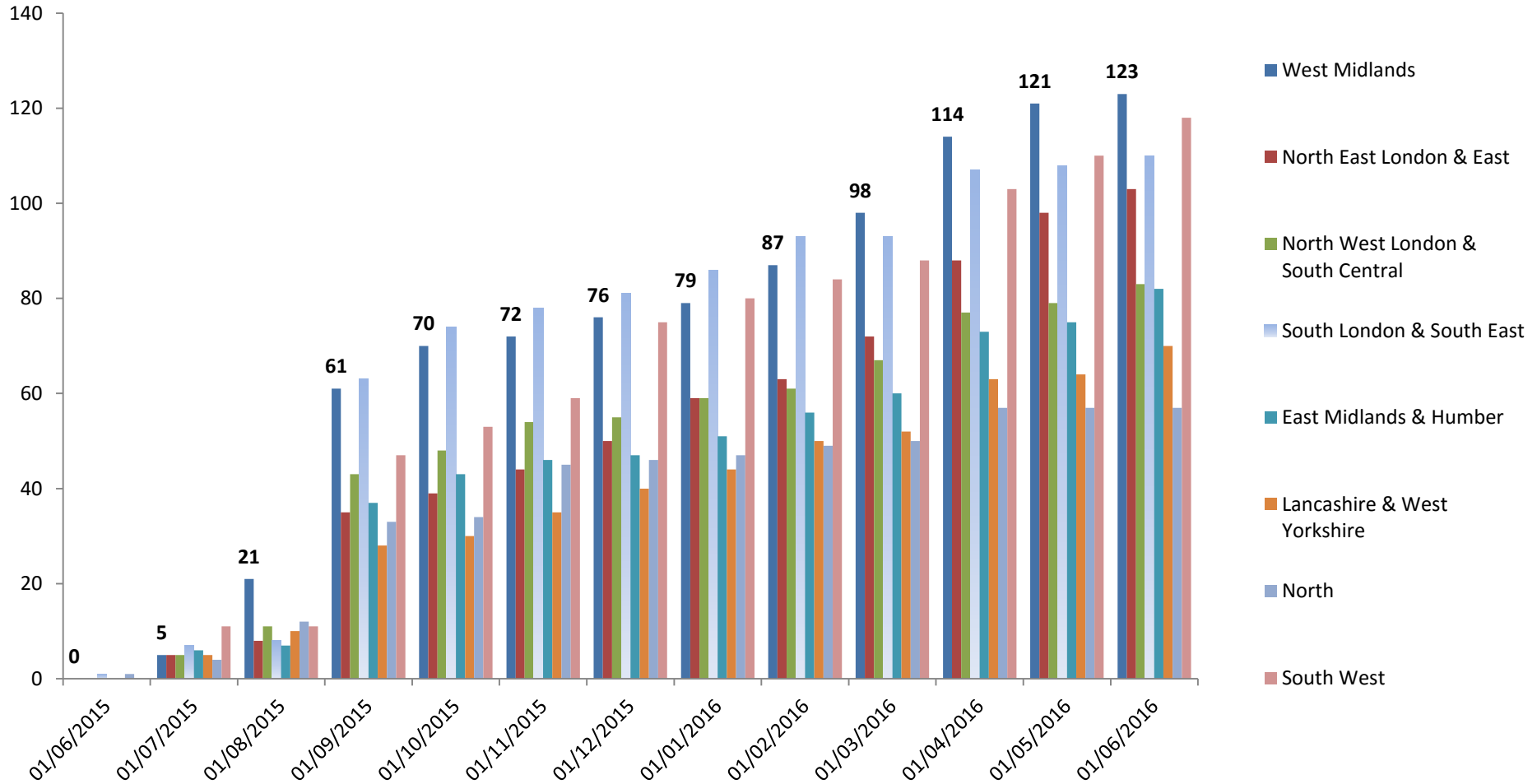
### Overall numbers of open academies

Phase of Education	Converter	Sponsored	Total
Primary (incl. middle deemed primary)	2099	975	3074
Secondary (incl. MD secondary, all through and 16 plus)	1430	595	2025
Special	149	32	181
Alternative Provision	43	13	56
<b>Total</b>	<b>3721</b>	<b>1615</b>	<b>5336</b>



# Academy Growth

## Growth in Academies since 01st June 2015 to 1st June 2016 (All RSC Regions)





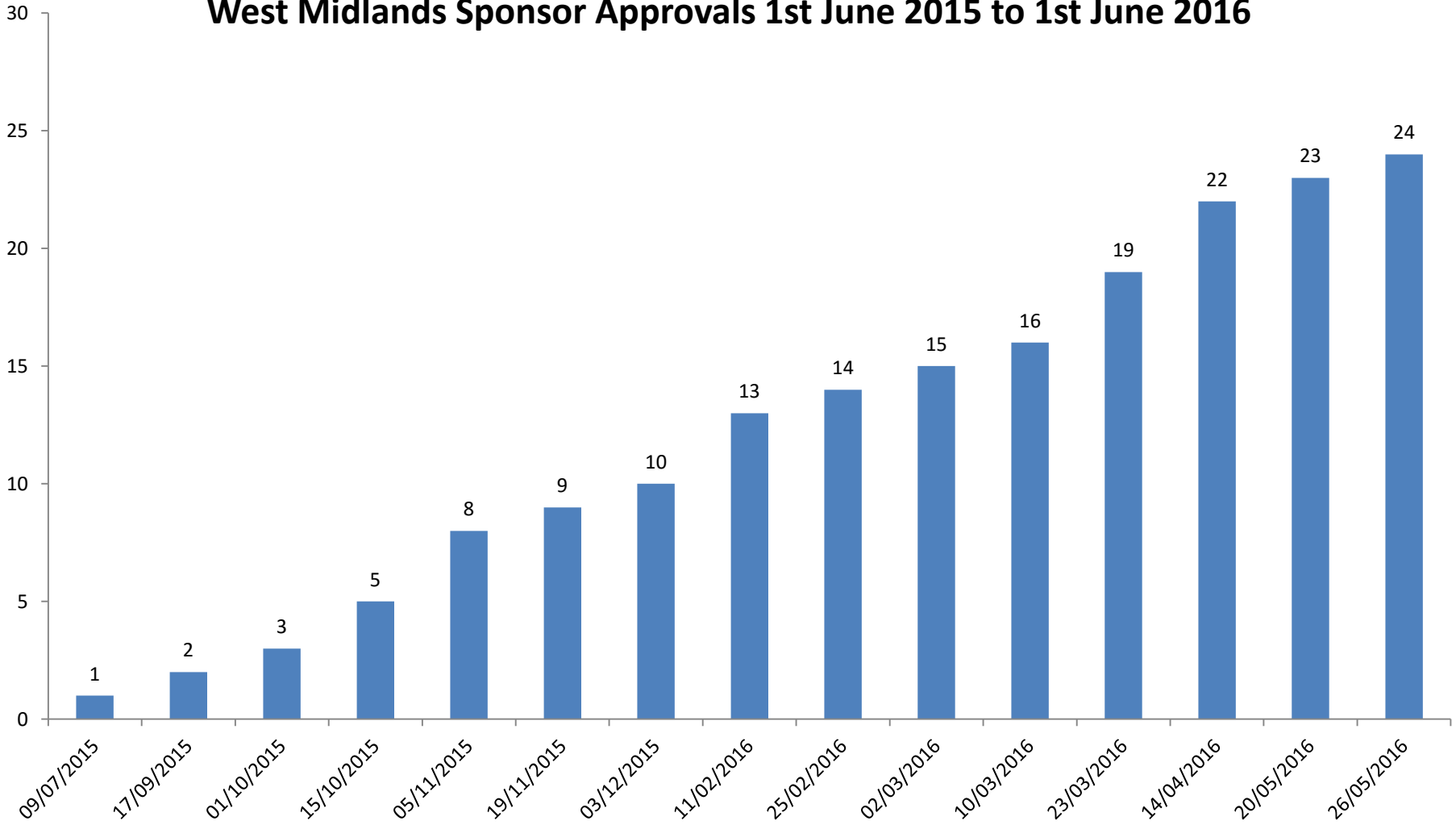
# *Increase in Academies by Local Authority for the West Midlands Region*

	Birmingham	Cheshire East	Cheshire West and Chester	Coventry	Dudley	Herefordshire	Sandwell	Shropshire	Solihull	Staffordshire	Stoke-on-Trent	Telford and Wrekin	Walsall	Warwickshire	Wolverhampton	Worcestershire	Grand Total
June 2015	138	46	21	23	15	31	30	21	20	71	40	7	28	65	26	61	643
June 2016	157	57	22	38	17	31	31	25	21	111	40	12	31	71	37	65	766
Percentage Change	14%	24%	5%	65%	13%	0%	3%	19%	5%	56%	0%	71%	11%	9%	42%	7%	19%



# Sponsor Growth

West Midlands Sponsor Approvals 1st June 2015 to 1st June 2016





Department  
for Education

## West Midlands

# Multi Academy Trusts Growth

- ✓ 67 **new** MATs in the last 12 months
- ✓ 104 MATs now in our region
- ✓ Many more in the pipeline





# Current Statistics

- ✓ By the end of last 2015 60% (3250/5444) of academies and free schools were in a collaborative MAT.
- ✓ 81% of academies and free schools that opened in the 2014/15 academic year did so as part of a MAT, up from 73% in 2013/14.
- ✓ 24% (703/2194) of academy trusts are MATs.
- ✓ 11 MATs have 30+ schools, that's 8 % of academies (2% of schools) are in a MAT of 30+
- ✓ 41% of academies standalone, 39% academies in MATs of 2-10 academies and 19% of academies in MATs of 10+
- ✓ 63% of academies and free schools that have opened since September 2014 have joined trusts of between 1 and 5 schools
- ✓ 77% of pupils in academies are in a trust of between 1 and 5



# Education Excellence Everywhere

- “The academy programme puts control of running schools in the hands of teachers and school leaders - the people who know best how to run their schools. That’s why the **government is committed to every school becoming an academy.**”
- “The government has decided, while reaffirming our continued determination to see **all schools to become academies in the next 6 years**, that it is not necessary to bring legislation to bring about blanket conversion of all schools to achieve this goal.”



# Education Excellence Everywhere

- “The government will continue to **require underperforming schools to convert to academy status** where they can benefit from the support of a strong sponsor.”
- “**We will also continue to support ‘good’ schools to convert and to take the lead in supporting other schools as part of multi-academy trusts.** In the last monthly figures 227 schools put in applications to convert, the highest monthly figure since the programme began, and we expect this rate to increase.”



# Education Excellence Everywhere

- In addition, the government will bring forward legislation which will trigger conversion of all schools within a local authority in 2 specific circumstances:
  - firstly, where it is clear that the local authority can no longer viably support its remaining schools because a critical mass of schools in that area has converted. Under this mechanism a local authority will also be able to request the Department for Education converts all of its remaining schools
  - secondly, where the local authority consistently fails to meet a minimum performance threshold across its schools, demonstrating an inability to bring about meaningful school improvement



# Developing a structure for MAT/MAC Growth

- Our **strongest Sponsors and Trusts** will need to grow
- Our **newest Sponsors and Trusts** will need to become established quickly
- We need to create a **Growth Development Plan** that enables RSC to assess capability **quickly and transparently**



# Developing a structure for MAT/MAC Growth

- **The Practice of our strongest Trusts**

- Strategic Plan for the MAT/MAC
- Accountability Framework
- QA Systems across all schools
- Delegated Framework

- School Improvement Model
- School to School Support Capacity
- Risk Awareness
- Succession Planning
- Value the networks that individual schools bring with them



# Developing a strategy for MAT/MAC Growth

- **Growth Focus Areas**
  - People and Leadership
  - Track Record and Performance
  - Governance Models and Capacity
  - Risk Management
  - Financial Stability
- **Different Stages of MAT Growth Plans**
- **Starter**
  - 1-5 schools (500-1200 children)
- **Established**
  - 5-15 schools (1200-5000 children)
- **National/Regional**
  - 15-30 schools
- **System Leader**
  - `30 or more schools



Department  
for Education

# New RSC West Midlands



***CEO and Executive Principal of Ninestiles Academy Trust, Christine Quinn, appointed as Regional Schools Commissioner for the West Midlands.***

- Christine Quinn:

***“I am delighted to be taking up the role of Regional Schools Commissioner for the West Midlands. Having worked in schools in the region for 25 years I relish the opportunity of working with Sir David Carter, the National Schools Commissioner, and the other regional schools commissioners to improve the life chances for all pupils and students in our schools and academies.***

***The richness and diversity of the West Midlands region makes the role of the regional schools commissioner in this area a particularly attractive one. I look forward to working with schools and academies along with their leaders and governors to secure the best possible experience for students and pupils in our region”.***





Department  
for Education



**WM RSC office: Department for Education, 53-55  
Butts Road, Coventry, CV1 3BH.**

**Email: [RSC.WM@education.gsi.gov.uk](mailto:RSC.WM@education.gsi.gov.uk)**