

The Academy Programme and Catholic Education: the evolving picture



Paul Barber
Director
Catholic Education Service

Mission: the Education of the Poor

"Schools before Churches": St Mary's College, Oscott, 1852



The Church provides schools to:

- Assist in its teaching mission
- Assist parents as primary educators
- Be a service to the local Church
- Be a service to society

Key Facts



One in ten schoolchildren in England attend a Catholic maintained school

819,069 PUPILS
ARE EDUCATED IN CATHOLIC SCHOOLS

69%

OF STUDENTS AND

53%

OF TEACHERS AT
CATHOLIC SCHOOLS
ARE CATHOLIC



THERE ARE 2142 CATHOLIC
SCHOOLS IN ENGLAND

THIS IS
OF THE NATIONAL TOTAL
OF MAINTAINED SCHOOLS **10%**

Inclusivity



CATHOLIC SCHOOLS ARE THE MOST ETHNICALLY DIVERSE IN THE COUNTRY

37%

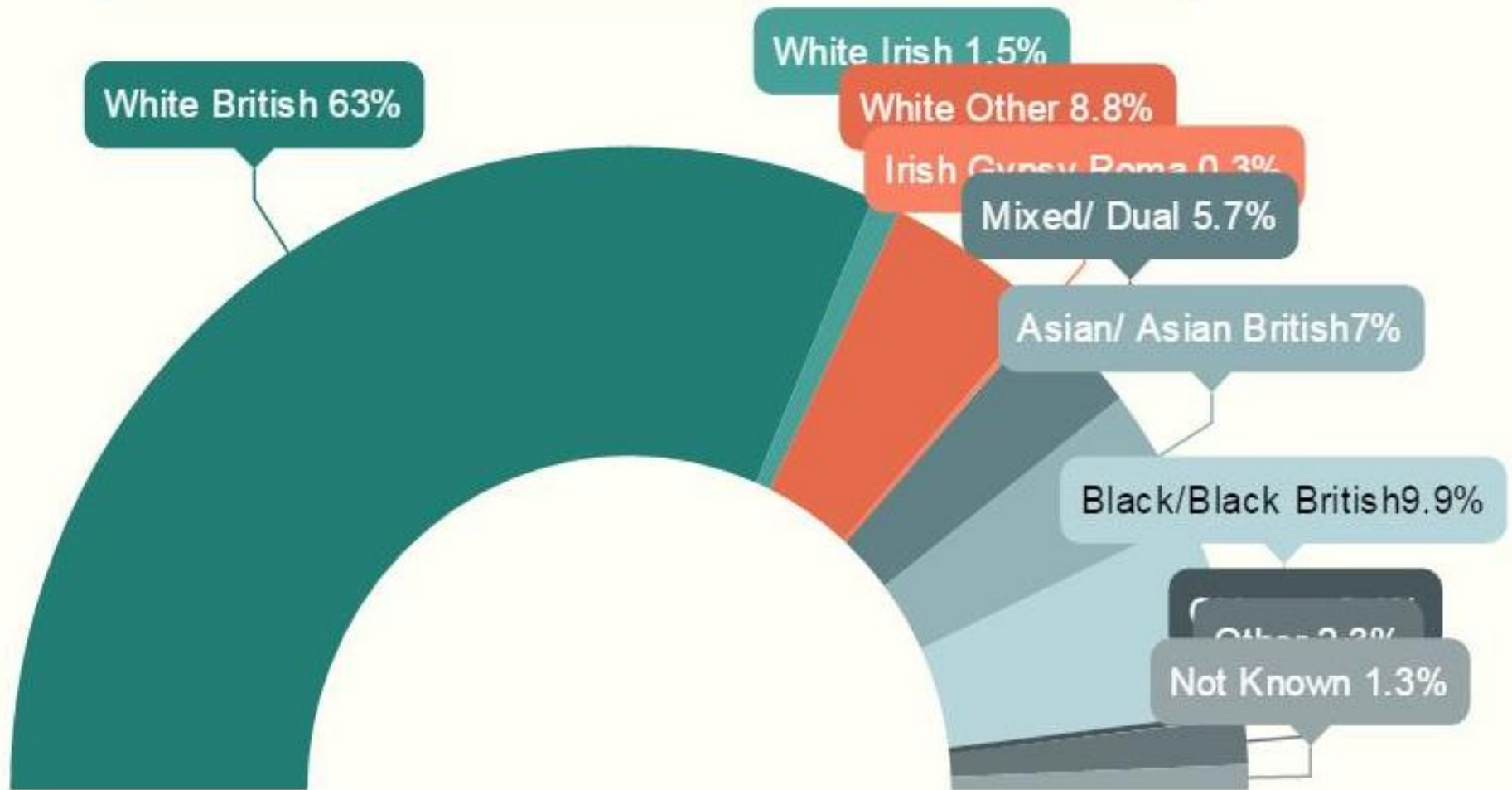
OF ALL PUPILS IN
CATHOLIC SCHOOLS ARE
FROM AN ETHNIC
MINORITY BACKGROUND

7%*

HIGHER THAN THE
NATIONAL AVERAGE

*percentage points

PUPIL ETHNICITY





**OF PUPILS IN
CATHOLIC
SECONDARY
SCHOOLS COME
FROM THE MOST
DEPRIVED
HOUSEHOLDS IN
ENGLAND**



*percentage points

Results

**At age 11, Catholic schools
outperform the national
average English and Maths
scores by 6% ***

**At GCSE, Catholic schools
outperform the national
average by 5% ***

*percentage points

Success



**83% OF CATHOLIC
PRIMARY SCHOOLS
HAVE OFSTED
GRADES OF GOOD OR
OUTSTANDING
(74% NATIONALLY)**



The Journey So Far

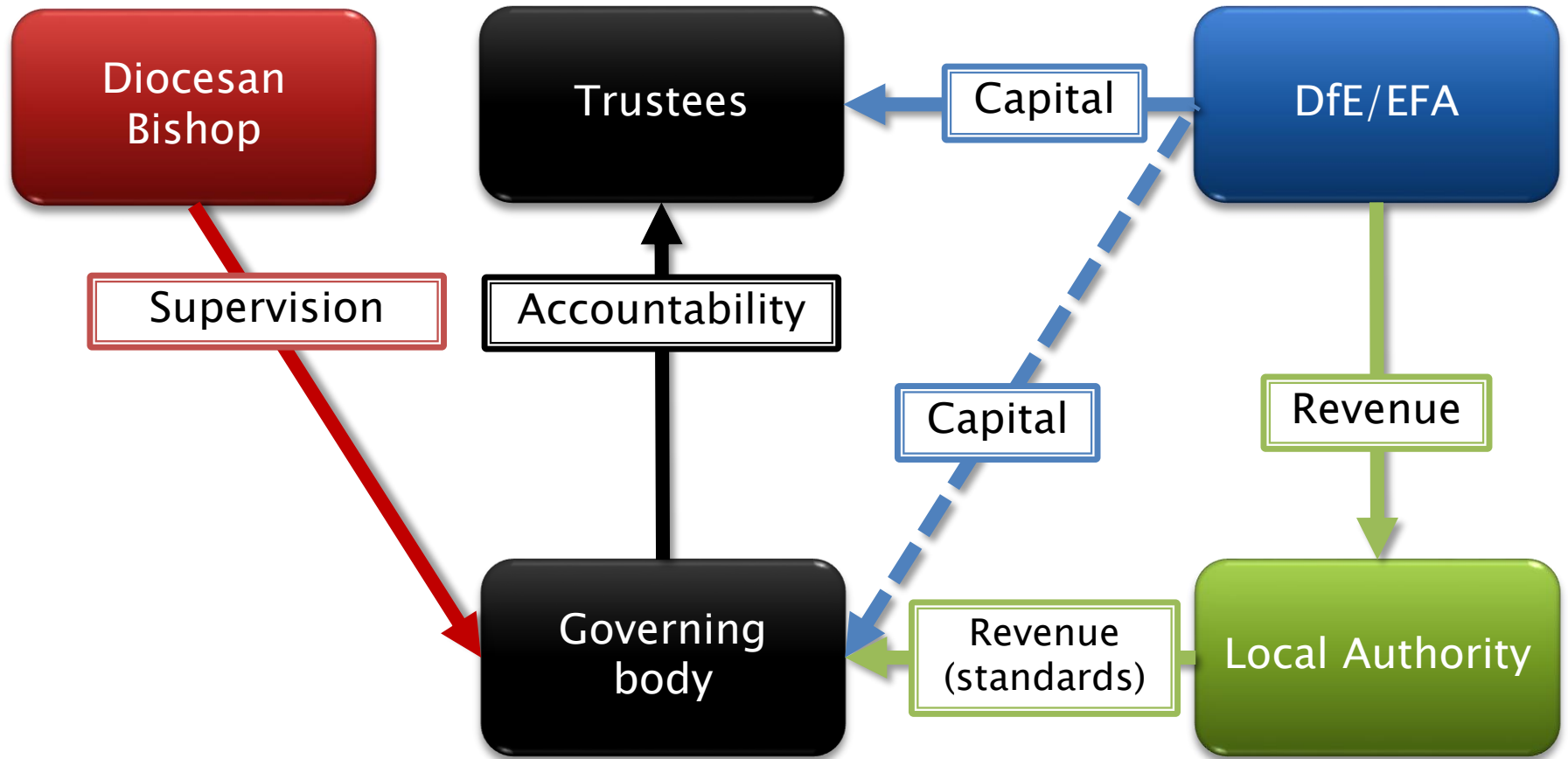
- ▶ 2010
 - Entirely Secular Model
 - Several solutions
 - Pioneering of Multi Academy Companies
 - Governance: principle of minimum change
- ▶ 2015: New Model Articles: fit for purpose
- ▶ 2016: Memorandum of Understanding
- ▶ Over 450 Catholic Academies (21%)
 - 94 in Birmingham
- ▶ But are we really welcome? (50% Cap)



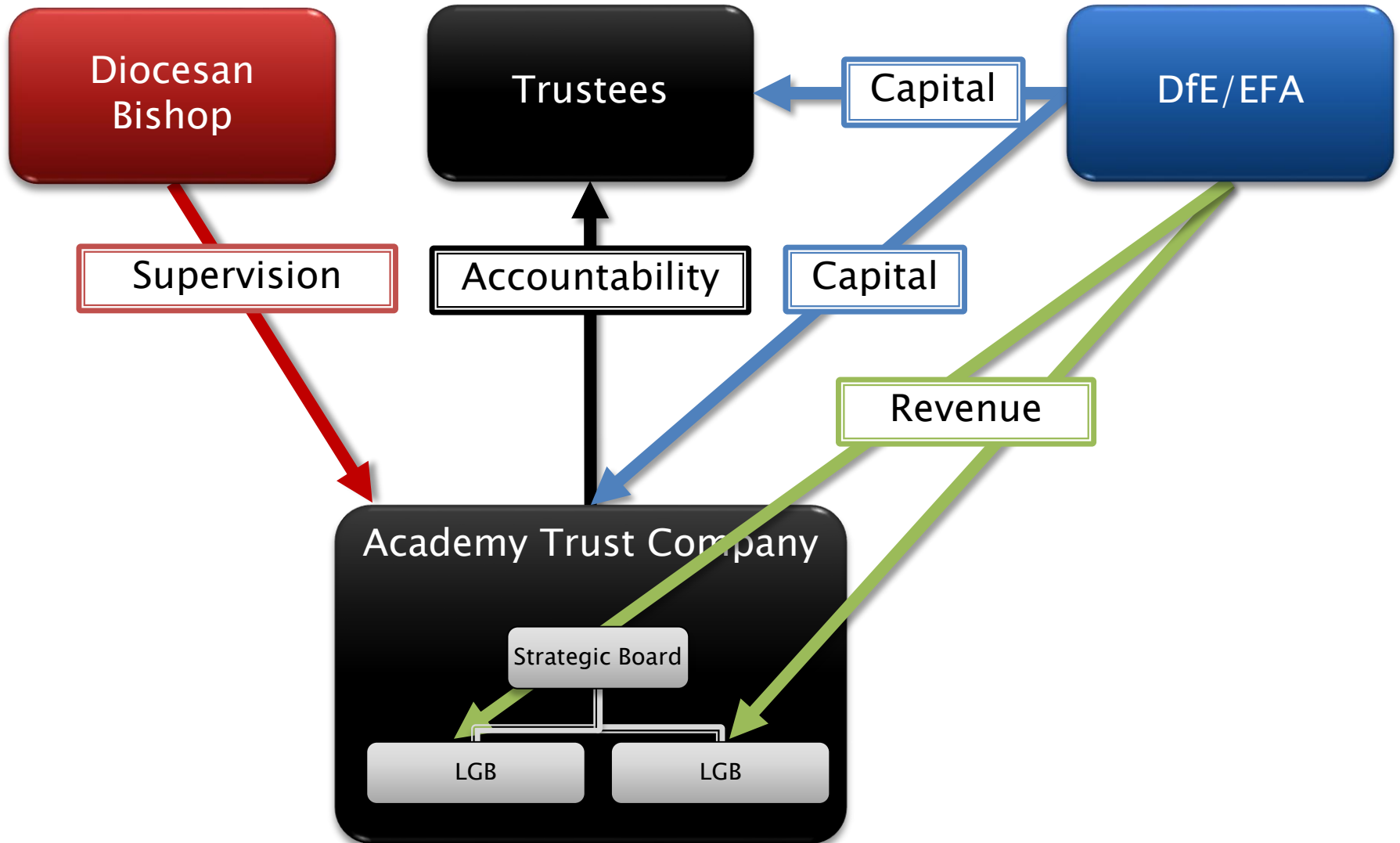
Structures

- ▶ From one system to another
- ▶ Statutory v 'contract'
- ▶ Legislation v policy and funding
 - Constitutional guarantees?
 - make it up as you go along?
- ▶ Responsibility for Standards
- ▶ Constitutional Issues
 - 1944 settlement
 - Centralisation

Voluntary Aided School: Relationships



Multi-Academy Company: Relationships

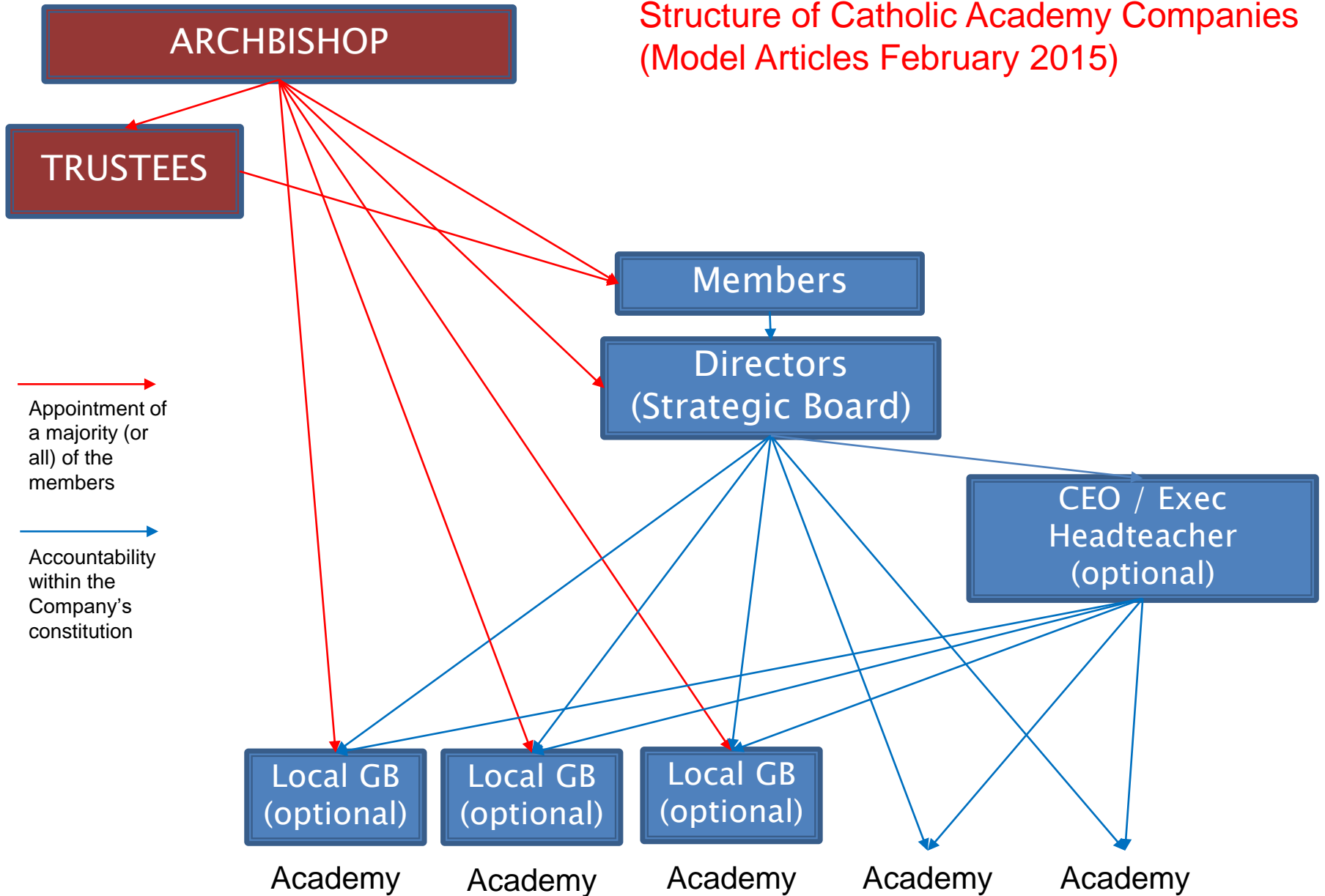




Where are we going?

- ▶ A bigger change than 1944?
- ▶ An opportunity to be seized?
- ▶ Full academisation?
- ▶ Funding?
- ▶ Maintaining?
- ▶ The role of Local Authorities?
- ▶ Governance?
- ▶ Catholic ethos?

Structure of Catholic Academy Companies (Model Articles February 2015)



Catholic Education Service



www.catholiceducation.org.uk

39 Eccleston Square
London SW1V 1BX

020 7901 1900

general@catholiceducation.org.uk